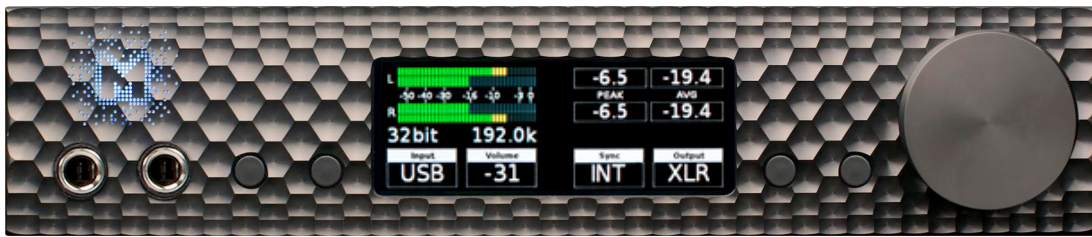


THE BROOKLYN

DAC • HEADPHONE • PREAMPLIFIER



MYTEK



Owner's Manual



DSD
Direct Stream Digital
256



MQA

DXD
Digital eXtreme Definition

VINYL

Owner's Manual Ver. 1.7 / July 2017

© Mytek 2017

The Brooklyn DAC firmware can be easily updated via Mytek USB Control Panel. As the firmware is updated, Mytek will be posting new firmware releases in the support/download section on Mytek website. Firmware may alter details of Mytek operation and consequently there will be periodic updates to this manual. For news, driver updates, technical support, tips and further product information please visit our website:

mytekdigital.com

Technical support issues are handled via our online support ticketing system. Please enter details of the ticket in the support/download section on Mytek website.

MYTEK

148 India St.
Brooklyn, NY 11222

tel. +1 (347) 384-2687

Contents

- 1. **Introduction**4
- 2. **Package Content**.....5
- 3. **Features**5
- 4. **Quick Start**.....6
 - 4.1 Front Panel6
 - 4.2 Rear Panel7
- 5. **Windows installation and configuration**8
 - 5.1 Windows – USB 2.0 driver installation8
 - 5.2 Windows – Mytek Control Panel installation process..... 10
- 6. **Brooklyn DAC OSX installation** 11
 - 6.1 OSX – USB 2.0 driver installation..... 11
 - 6.2 OSX – Mytek Control Panel installation. 11
- 7. **Firmware update Windows and OS X** 12
- 8. **User Adjustments** 12
 - 8.1 Reduction the output level 12
- 9. **Menu** 13
 - 9.1 Menu Navigation 13
 - 9.2 Menu Operation..... 14
- 10. **MQA - Master Quality Authenticated**..... 17
- 11. **Remote** 17
 - 11.1 The Brooklyn DAC Apple Remote Setup..... 17
 - 11.2 The Brooklyn DAC Standard Remote (RC5) Setup..... 18
- 12. **Technical Specification**..... 18
- 13. **Warranty**..... 19
- Important Safety Information** 19



1. Introduction

Thank you for choosing the Brooklyn DAC from Mytek Digital and welcome to the Mytek users' community.

Over 20 years of experience in building mastering grade converters and other audio equipment has been utilized to create this digital to analog converter. Its sophisticated audio path is designed to deliver bit perfect, high quality, transparent sound to your speakers and headphones. The Brooklyn DAC will play:

- PCM up to 32 bit / 384 kHz.
- DSD64, DSD128, DSD256
- MQA master quality files off online streaming services.
- Vinyl records utilizing its precision M/C, M/M phono preamplifier.
- Any other digital source equipped with Toslink, SPDIF, AES or DSD SDIF out.
- Any other analog source plugged into analog input.

The Brooklyn DAC has been optimized for highest performance under Windows, Mac OS and Linux. Based on a newly developed Mytek Hi-Speed USB (USB2) Audio Class 2 32bit/384kHz Integer Interface, the Brooklyn DAC provides very low latencies as well as extreme stability. Fast Windows drivers including ASIO & WASAPI are provided. Mac OSX and Linux computers as well as the Linux audio streaming devices do not require a driver.

Enjoy your new Brooklyn DAC!

All the best,
The Mytek Digital Team

2. Package Content

- The Brooklyn DAC (silver or black)
- USB 2.0 Cable
- Aluminum remote (Apple)
- Power cord
- Owner's manual
- Gain adjustment jumpers

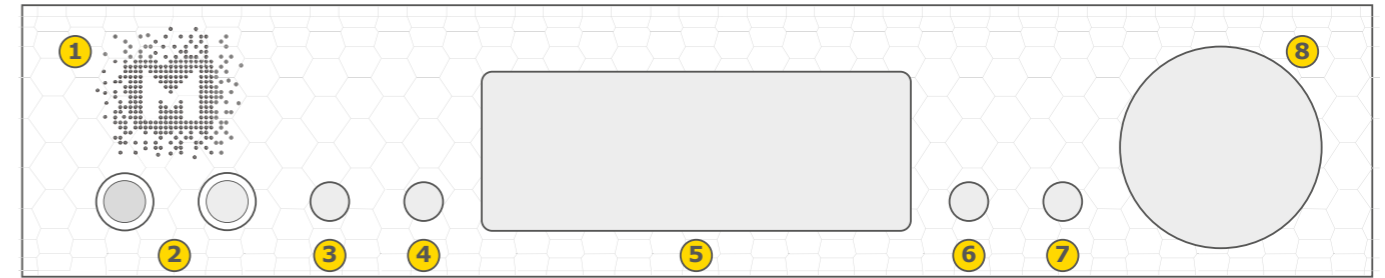


3. Features

- Conversion: up to 384k, 32bit PCM, native DSD up to DSD256, DXD, 130dB Dynamic Range
- Analog outputs: RCA, balanced XLR, simultaneous
- Headphone outputs: Reference High Current, High transient balanced Headphone Amp, 500mA, 6 Watts, dual headphone jacks, designed to drive hard to drive headphones.
- Built-in Attenuator: Choice of 1dB step analog attenuator, separate for main out and headphones, 1dB step digital 32 bit attenuator and purist relay bypass.
- AES/EBU Input: PCM up to 32bit / 44.1kHz, 48.0kHz, 88.2kHz, 96.0kHz, 176.4kHz, 192.0kHz, 352.8kHz, 384.0kHz, DSD64 DSD128 (DoP)
- 2x S/PDIF Coaxial Input: PCM up to 32bit / 44.1kHz, 48.0kHz, 88.2kHz, 96.0kHz, 176.4kHz, 192.0kHz, 352.8kHz, 384.0kHz, DSD64 DSD128 (DoP)
- SPDIF Optical Input: PCM up to 32bit / 44.1kHz, 48.0kHz, 88.2kHz, 96.0kHz, 176.4kHz, DSD64 (DoP)
- SDIF3 DSD Input: DSD64, DSD128, DSD256 (natively)
- Mytek proprietary USB 2.0 Class 2, up to 32bit/384k, DSD256, also accepts digital AES, SPDIF and Toslink inputs. This USB interface also allows stacking of multiple Mytek units for multichannel operation
- Mytek Femtoclock 0.82ps internal jitter, Wordclock Input and Output (allows stacking multiple units for multichannel operation, includes mch DSD)
- Built-in Analog Preamp: Line level input or Precision Phono M/M, M/C input, relay controlled.
- Choice of Transparent Analog or Digital stepped volume control with "Bypass" option for the purest signal path.
- Built in certified hardware Hi-Res MQA decoder
- High definition metering with simultaneous RMS and peak indication
- Four digital inputs are fitted (1x AES/EBU, 2x S/P DIF and 1x TOSLINK/ADAT) which allow a wide range of digital sources to be connected.

4. Quick Start

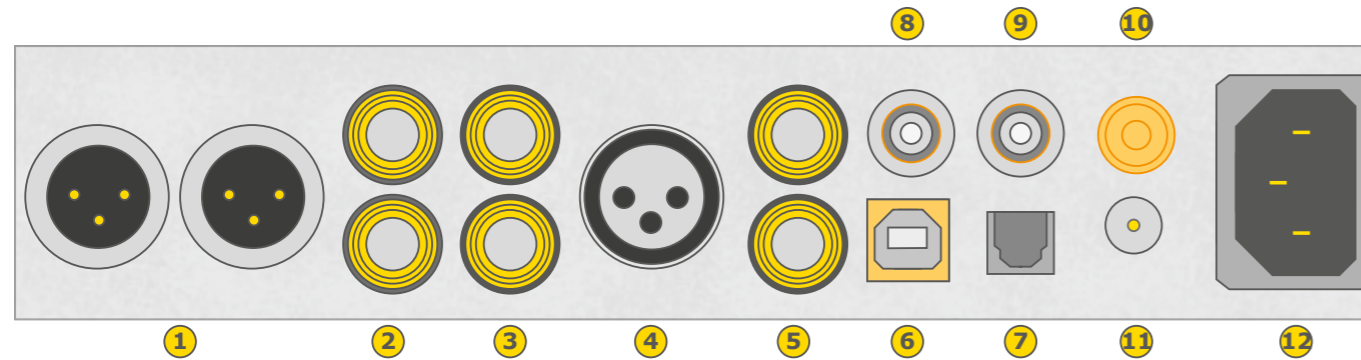
4.1 Front Panel



1. Mytek backlit logo with its color and brightness user adjustable. Color follows the color of the Mytek Control Panel software and may indicate specific functionality.
2. Headphone Output Section, Dual Mono, with Balanced Operation mode [500mA, 6 Watts]. Left jack connects unbalanced phones in absolute phase. Right jack connects unbalanced phones in absolute out of phase. A special 2x 1/4" jack to 4 pin FXLR allows for connection of single balanced headphones. Balanced headphones will play twice as loud (+6dB) as unbalanced headphones with output voltage swing of +-12V and output impedance below 0.5 Ohm
3. Functional button enables the user to quickly choose an option, change and configure the device's settings. At the picture shown above it activates "Sample Rate" menu.
4. Functional button enables the user to quickly choose an option, change and configure the device's settings. At the picture above it activates "Volume".
5. OLED display
6. Functional button enables the user to quickly choose an option, change and configure the device's settings. At the picture above it activates "Input" menu.
7. Functional button enables the user to quickly choose an option, change and configure the device's settings. At the picture above it activates "Mode" menu.
8. Rotary Encoder Knob. This encoder is both a knob and a button. It's primary function is to control the volume level. It also functions as MENU navigation for configuring device's options.

Press and hold the main knob to turn the Brooklyn DAC on or off.

4.2 Rear Panel



1. Balanced XLR Stereo Analog Output
2. RCA Stereo Analog Output
3. RCA Stereo Analog Input
4. AES/EBU Input. Professional digital input which accepts up to 192kHz/24bit. Accepts DSD DOP standard input up to DSD64. This input can also be used to transmit digital audio into computer via USB2 connection.
5. S/PDIF Coaxial Input 1 and S/PDIF Coaxial Input 2 . These are digital inputs which accept up to 192kHz/24bit. They also accept DSD DOP standard input up to DSD64. This input can also be used to transmit digital audio into computer via USB2 connection. To obtain best results, use a high quality 75 ohm digital RCA interconnect cable.

Note – these two inputs can also operate as stereo SDIF2/3 DSD input with 2 BNC->RCA adapters for use with professional DSD recording equipment (such as Tascam Master Recorders).

6. Mytek proprietary USB 2.0 Class 2, up to 32bit/384k, DSD256, also accepts digital AES, SPDIF and Toslink inputs. This USB interface also allows stacking of multiple Mytek units for multichannel operation.
7. Optical Input (Toslink / ADAT). Digital input which accepts up to 192kHz/24bit. Accepts DSD DOP standard input up to DSD64. This input can also be used to transmit digital audio into computer via USB2 connection. For best results use short high quality TOSLINK cable. Special glass fiber Toslink cable allows for longer cable runs and is less jittery than regular plastic fiber.
8. Wordclock BNC input. Can be used for professional clock distribution and for syncing multiple units and as DSD reference clock. Can also be used for connecting the Brooklyn to external clock. However, we recommend running Mytek on Internal Clock, using the built in Mytek FemtoClock which is by far superior (<1ps jitter) to any clock source connected from outside.
9. Wordclock BNC output. Used for professional clock distribution. 192KHz and DSD reference clock. Mytek Femtoclock Generator (tm) 0.82ps internal jitter, Wordclock Input and Output (allows stacking multiple units for multichannel operation, includes multichannel DSD)
10. Phono ground
11. Optional external DC / Battery Power input; 12VDC. Connecting a large external battery or large power supply may have positive impact on sound quality.
12. The build in automatic power supply operates in the range of 100V to 240V AC

Quick Start – Immediate Playback AES/EBU, SPDIF and Toslink

Connect the analog outputs to your powered speakers, power amplifier or preamplifier. Alternatively use headphones. Connect the digital source (CD player) to the DAC. Power up the player, power amplifier and the Brooklyn DAC. Upon power up, the DAC will default to its default settings hand picked by our team to produces the optimal sound quality. Choose the input you would like to use.

Attention! To prevent damage, do not turn on your speakers on until all connections have been made

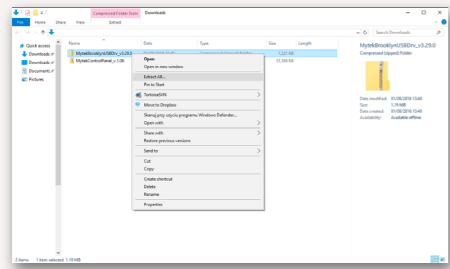
5. Windows installation and configuration

- Turn off your amplifier then connect the Brooklyn DAC Analog Outputs to your amplifier's analog inputs. Balanced connections (XLR) are typically for professional audio equipment while unbalanced connections (RCA) are typically for consumer audio equipment.
- Note that for proper operation it is necessary to install the USB2 driver (Windows only) and Mytek Control application. Both these have separate installers.

5.1 Windows – USB 2.0 driver installation

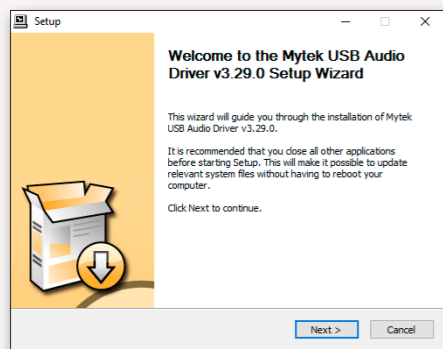
To simplify installation it is recommended to first install the drivers before the unit is connected to the computer. The latest drivers are available at mytekdigital.com

1. Locate the MytekUSB2Drv.v3.xx.x.zip file and extract the contents of the archive by right clicking on the zip archive icon and selecting „Extract Here“.

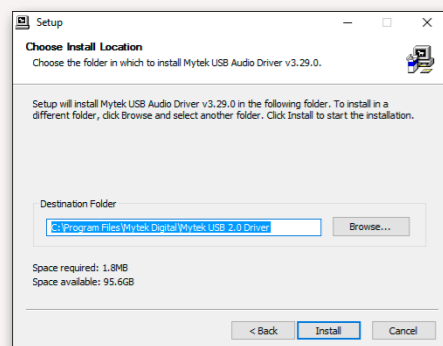


2. Installation works automatically by a double-click on MytekUSB2Drv.v3.xx.x.exe file.

3. Once the Setup.exe opens click „Next“.

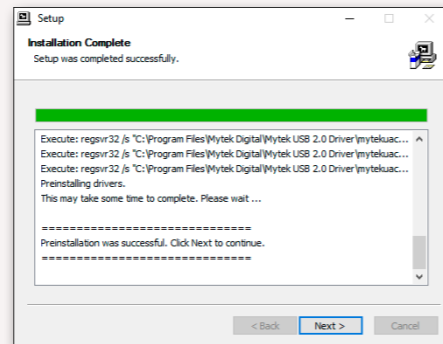


4. Choose the location of installation. Default location is „C:\Program Files\Mytek Digital\Mytek USB 2.0 Driver“. We recommend leaving this as it is. If you wish to customize the install choose the location by selecting browse. Click „Install“.

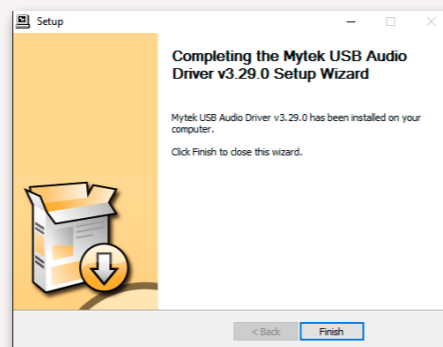


5. Setup.exe will now install the Mytek Driver. This process may take a few minutes.

6. Upon completion of „Setup.exe“ press the „Next“ button.



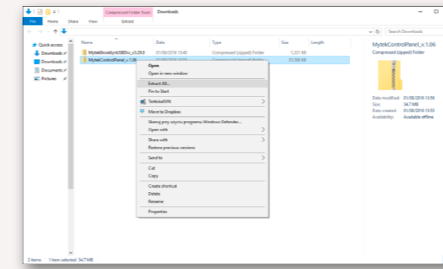
7. To complete installation of the driver simply click the „Finish“ button.



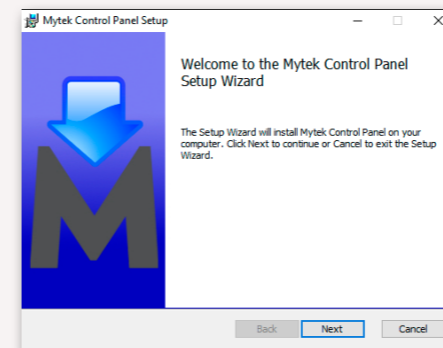
8. Connect the Brooklyn DAC to USB2 port in your computer.

5.2 Windows – Mytek Control Panel installation process

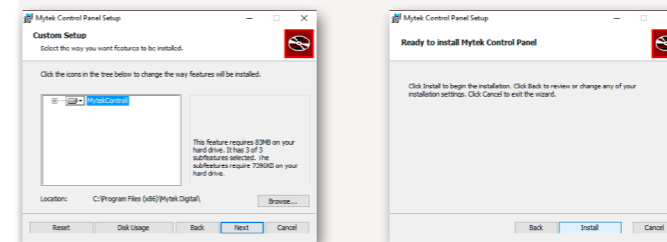
1. Locate the MytekControl.zip file and extract the content by right clicking on the zip archive icon and selecting "Extract Here".



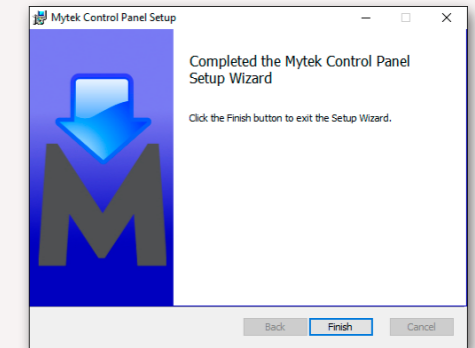
2. To install The Mytek Control double click the extracted Windows Installer Package file. When MytekControl Setup Wizard appears click „Next“ then accept license and click „Next“ again.



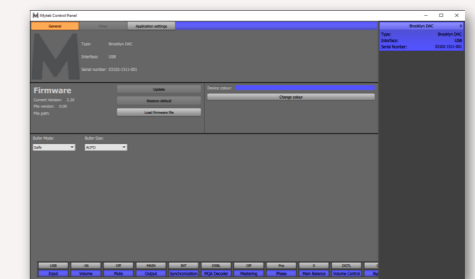
3. All options should be chosen in „Custom Setup“ menu. To confirm the installation of each option select „Will be installed on local hard drive“ then click „Next“ and „Install“ to begin the installation.



4. To complete installation of the driver simply click the „Finish“ button.

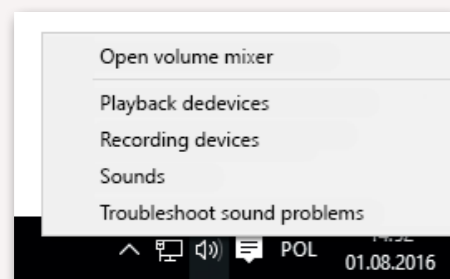


5. Confirm installation by launching the MytekControl application. Installation was successful if the MytekControl application shows the Brooklyn DAC with serial number and permits access to all options.

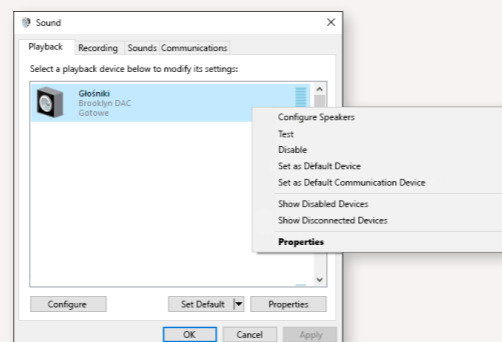


5.3 Windows – setting the Brooklyn DAC as default system playback device.

1. To set the Brooklyn DAC as your default Windows playback device find the speaker icon (Sound Settings) in the notification area (lower right corner of your screen) and right-click. Choose "Playback devices" from the context menu.



2. Right-click „Speakers Brooklyn DAC” and choose „Set as Default Device”.



Note! – pro audio (DAW) applications (Cubase, Samplitude, Reaper etc.) or professional media players (Jriver etc.) use ASIO drivers and need to be configured different way. Please check our „Software Setup Guide” shown on our web site:

mytekdigital.com

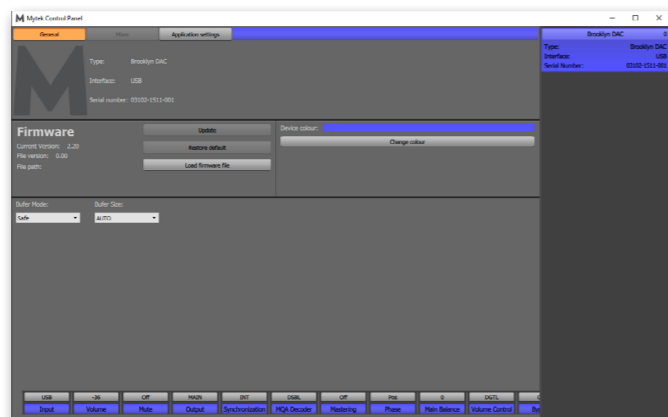
6. Brooklyn DAC OSX installation

6.1 OSX – USB 2.0 driver installation

The Brooklyn DAC custom designed USB2 controller supports **driverless** operation on MAC. It means that no extra drivers are required. Driverless operation basically means „**plug and play**”. The Brooklyn DAC will automatically show up in your computer’s list of supported audio devices as „Brooklyn DAC”. Simply choose that as your default audio playback device and the system will work.

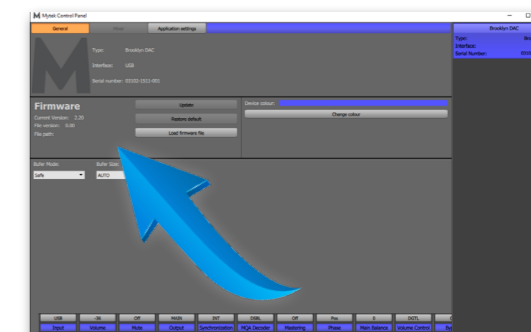
6.2 OSX – Mytek Control Panel installation.

To install the Mytek Control Panel simply drag and drop Mytek application file (located in Mytek_ControlPanel_v.1.xx.dmg file) to „Applications” system folder. Follow the link to download the latest version of the Mytek Control Panel application.



7. Firmware update Windows and OS X

The current revision of the Brooklyn DAC firmware is shown in the MytekControl „General” tab.



- The firmware can be updated by using USB2 port and Mytek Control Panel application. It requires already installed USB2 driver (PC only) and Mytek Control Panel application. To download the current firmware as well as drivers please visit mytekdigital.com
- It is recommended to turn off any powered speakers / power amps connected to the Brooklyn DAC before proceeding with the firmware update.

Follow the steps below to update the firmware:

1. Download the latest firmware (*.mfb) file from mytekdigital.com
2. Click „Load firmware file” button and browse to the new firmware file then click „Open”.
3. Press the „Update” button to confirm uploading the firmware file to device's memory.
4. Confirm your choice by clicking „Yes” when warning dialog appears. A progress bar will indicate when the flash process is finished.
5. When the update is finished the the DAC will reset and start in sleep mode. To switch it on press the knob once. Once the DAC has been restarted the firmware update is complete. A reboot of the computer is not necessary.

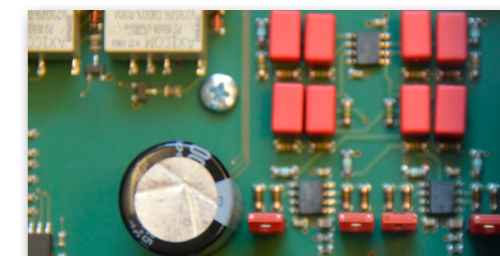
When the update fails:

1. Disconnect power cord.
2. Press and hold the first (from the left) button and connect the power cord again.
3. The DAC runs in Bootloader mode. The logo becomes white and blinks constantly.
4. The update process should then be tried again.

8. User Adjustments

8.1 Reduction the output level

Internal -6db Gain Jumpers: these 4 jumpers allow the user to reduce the output level of the Brooklyn DAC by 6 db without affecting sound quality. All 4 jumpers must be engaged to ensure proper operation and should only be used when the DAC is clearly overloading the following amplifier stage in the chain.

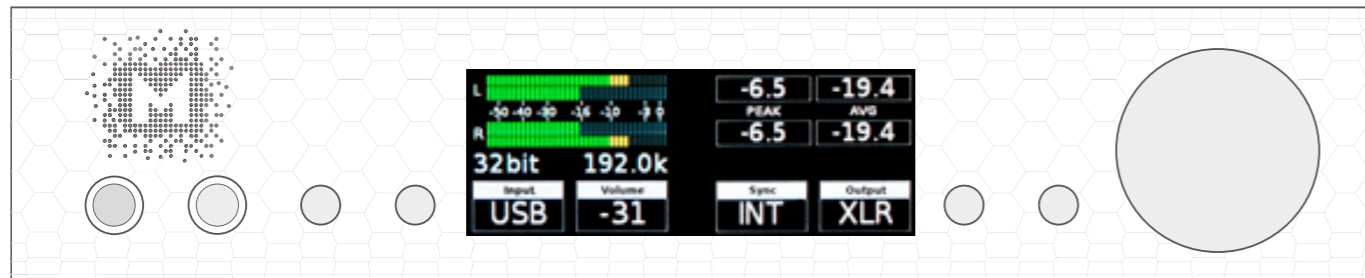


Note! - the power cable must be disconnected during the jumpers adjustment. Otherwise the DAC might get damaged.

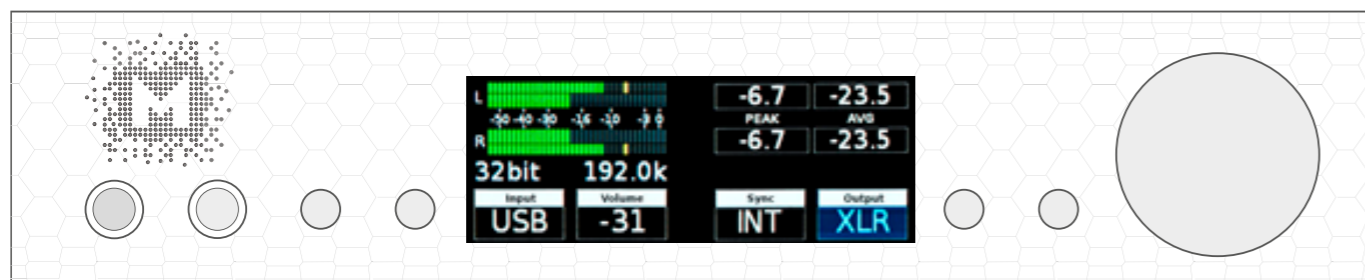
9. Menu

9.1 Menu Navigation

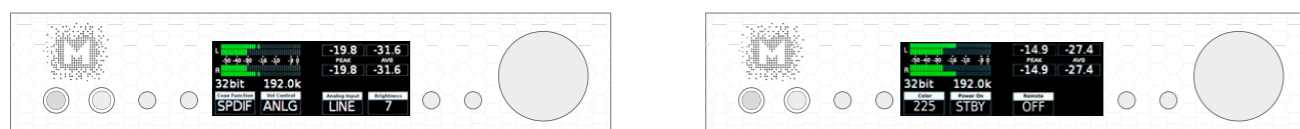
The four buttons, one encoder and the high-resolution display enable the user to quickly change and configure the device's settings. There are always four parameters shown at the bottom of the display.



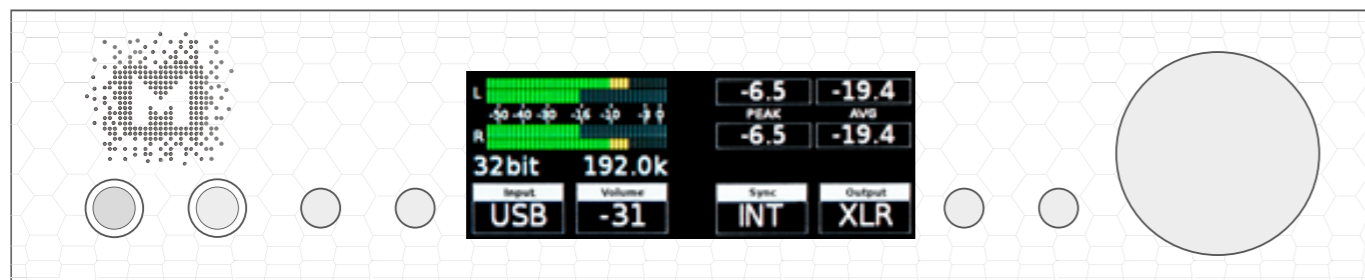
To enter the one of four parameters menu shown on the display, press one of the four buttons located on the left and right side of LCD display. When the value is ready to change it is back-lit with blue colour. To change the value rotate the knob until you see the option / value you need. Press the knob (or the same button) again to leave the menu.



Turn the knob round to navigate between all available parameters.



Press the knob once to activate the screensaver.



Press and hold the knob to switch the Brooklyn DAC off / on.

9.2 Menu Operation

9.2.1 9.2.1 Input

- **USB2** - Hi-speed, custom designed, Class 2 compliant computer input that is capable of 384kHz (PCM) and up to 256DSD playback. Fast, reliable Windows drivers are provided. Plug and Play, driverless on MAC and Linux.
- **AES** - digital input capable of receiving PCM data up to 192kHz and DSDx64 (DoP). This input can also be used to record digital signal to computer (DAW) via USB2 connection.
- **SPDF1 & SPDF1** (S/PDIF1&2) – coaxial S/PDIF input capable of receiving PCM data up to 192kHz and DSDx64 (DoP). This input can also be used to record digital signal (DAW, sound editors) to computer via USB2 connection.
- **SDIF L-R** - professional DSD input capable of receiving DSD format (up to x256).
- **OPTO** (Toslink) - optical S/PDIF input capable of receiving PCM data up to 192kHz and DSD DOP (64xDSD only). Also available as separate pair of digital inputs in recording software.
- **ANLG** (Analog) - RCA analog input, line level or phono preamp (MM, MC), it can bypass the volume control or be routed through it.

9.2.2 Volume - volume level.

9.2.3 Mute - all outputs are muted.

9.2.4 Output signal routing

- **HP** - the signal is available on headphones output only
- **MAIN** - the signal is available on XLR and RCA outputs.
- **BOTH** - the signal is available simultaneously on MAIN (XLR & RCA) and HP outputs
- **AUTO** - Brooklyn DAC detects if headphones has been connected. MAIN outputs are muted.

9.2.5 Sync

There is always only one master device in digital world. The others have to operate as a slave. That is why an external digital devices such as CD players, digital recorders etc. have to be also configured properly. Otherwise clicks, drops, distortions might appear in the final signal. Following sync options are available:

- **INT** (Internal) / USB / Incoming signal is synced to the converter's ultra-low jitter internal crystal oscillator. This choice assures the best DAC performance and is superior to any (even Atomic) clock supplied from outside because of its close proximity to DAC clocking chipset. The DAC operates as master device. WordClock OUT transmits master clock signal
- **WCK** (Word Clock) / available for USB, AES, SPDIF1 &2, Toslink, SDIF / the DAC can operate as the master or slave device.

*The Brooklyn DAC is master and external device is slave: Brooklyn DAC WCK OUT -> external device WCK IN
The Brooklyn DAC is slave and external device is master: Brooklyn DAC WCK IN -> external device WCK OUT*

- **IN** (Input) /available for AES, SPDIF1 &2, Toslink / the DAC operates as slave device.
- **44,1 – 192 kHz** (Internal) /available for AES, SPDIF1 &2, Toslink / the DAC operates as master device, WordClock OUT transmits master clock signal.
- **x64 – x256** (Internal) /available for SDIF / the DAC operates as master device

9.2.6 SDIF Rate - determines the rate of DSD when SDIF inputs are used

9.2.7 MQA Decoder

- **Enabled** (ENBL) - MQA decoder is activated. The filter is fixed at minimum phase.
- **Disabled** (DSBL) - to enable Mastering menu the MQA must be switched off.

9.2.8 Mastering - these are additional functions intended for proaudio applications. Available only when the MQA is disabled.

- **Off** - default
- **Mono** - sums left and right channel to mono.
- **L-R** - Subtracts one channel from the other, canceling out mono information while leaving the stereo information.
- **MS** - A combination of Mono (L+R) and L-R, the mid signal is the sum of L and R (mono) and the side signal is the stereo information from the L-R operation.

9.2.9 Phase - phase switch

- **Pos** - default
- **Neg** - the signal phase is inverted

9.2.10 Main Balance - audio balance control

9.2.11 Vol Control

- **ANLG** (Analog) - the output level is controlled by the analog fader.
- **DGTL** (Digital) - the output level is controlled digitally with ultra precision digital attenuator.

9.2.12 Bypass

Relay bypass of all faders for the cleanest output path possible. Only the main outputs are affected while the headphone output is still controlled by analog fader.

Attention! To prevent damage your speakers reduce the output level of your preamp BEFORE activating "Bypass" mode.

9.2.13 USB Volume [HID]

When this option is enabled the DAC main outputs signal level can be controlled by OS volume fader. Click small speaker icon shown in Windows taskbar to see the fader. If the icon is not visible please go to your system settings „Notifications & actions“ (Win10) and enable it.

Attention! When AES, SPDIF coaxial or SPDIF optical input is used and the DAC is still connected to a computer via USB port the USB Volume option must be disabled. Otherwise the DAC can damage your speakers as it can play too loud.

- **DSBL (default)** - Volume can be controlled by using Mytek Control Panel or volume knob at the front of the DAC.

This setting is recommended when AES, SPDIF coax, SPDIF optical inputs are used and the DAC is still connected to computer.

- **dB** - OSX or Linux recommended setting. Signal level can be controlled by using Mytek Control Panel, volume knob or main system fader.

- **Win** - Windows recommended setting. Signal level can be controlled by using Mytek Control Panel, volume knob or main system fader.

9.2.14 Analog Input

(Analog Input Mode) - A pair of unbalanced analog inputs can be selected in addition to all available digital inputs. As with other inputs, it can be routed via the analog stepped attenuator to both main outputs and headphones. One of three modes can be selected:

- **LINE** - line level input
- **P MM** - phono preamp, for Moving Magnet cartridges
- **P MC** - phono preamp, for Moving Coil cartridges

9.2.15 Coax Function

RCA digital inputs can operate in two modes:

- **SPDIF** - S/PDIF digital mode.
- **SDIF** - SDIF digital mode, RCA - BNC adapters are required, these are not included in the bundle.

9.2.16 PCM Filt Shpe (PCM Filter Shape)

- **MPH** (Minimum Phase)
- **SR** (Slow Roll-Off)
- **FR** (Fast Roll-Off)

Note! When MQA is enabled the filter is fixed at „minimum phase“ and all above settings are not available.

9.2.17 DSD Filtr BW (DSD Filter Bandwidth)

- **AUTO** – the filter is selected automatically depending on DSD rate: for DSDx64 - LO, DSDx128 - MED, x256 - HI. It is highly recommended to leave this option enabled.
- **LO** - 47,44 kHz IIR Filter
- **MED** - 60kHz IIR Filter
- **HI** - 70 kHz IIR Filter

9.2.18 Disp Auto Off (Display Auto Off) - sets the interval when the display is turned off. It is still possible to listen to music while the display is off. To return to the main screen press any button on the frontpanel (including Vol knob).

9.2.19 Display Bright – this allows to adjust brightness of the display.

9.2.20 Auto Return – determines the time of activation of the simple screen.

9.2.21 Diode Bright (0 – 16 steps) - sets the brightness of the logo.

9.2.22 St-by D Bright – sets the brightness of the logo in Standby mode.

9.2.23 Colour – sets the colour of the logo, 16 colours are available.

9.2.24 Power On - (when the power cord is attached to the DAC)

- **WORK** - the DAC activates itself in standard working mode
- **STBY** – the DAC activates itself in sleep mode
- **AUTO** – the DAC remembers last mode

9.2.25 Remote (Remote Control mode)

- **OFF** - the „Remote“ function is turned off
- **RC5** - the „Remote“ is turned on, standard RC5 compatible r-controllers can be used
- **NEC** (Apple) - the „Remote“ is turned on, Apple remote can be used (included in the bundle)

9.2.26 Remote Addr (Remote Address)

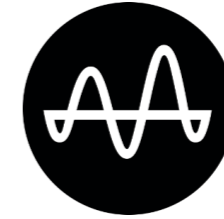
Available only when „Remote“ is activated. It is found automatically when you press a remote controller's button.

9.2.27 Device

- **INFO** - shows firmware version
- **RESTORE** – restore the Brooklyn DAC to the factory settings.

Note! All above settings can also be changed by using the Mytek Control Panel application.

10. MQA - Master Quality Authenticated



The Brooklyn DAC is capable to decode MQA files. The option can be activated in the Brooklyn DAC's menu. The colour of the MQA logo indicates if the MQA stream is detected.

- **Grey logo** – MQA not found, MQA stream is not detected
- **Green logo** – MQA valid, the MQA is detected
- **Blue logo** – MQA authored, the MQA is detected and the file is fully authenticated. You can be sure you are hearing exactly what the artist approved in the studio

What is MQA?

MQA is audio recording and compression format created by Meridian Audio. It is also a new sophisticated method of digitally storing recorded music as a file that is small and convenient to download or even stream. There are no sonic sacrifices that are usually associated with compressed files. What this basically means is that high resolution audio streaming could finally be a reality, with songs being able to be delivered exactly how they were recorded in the studio, without requiring huge amounts of bandwidth to deliver.

How does MQA work?

MQA can pack up the information from a lossless 24-bit 192kHz PCM file into the sort of space needed for a 24-bit / 44.1kHz stream. In practice, MQA is delivered to listeners as a typical lossless file, such as FLAC or Apple Lossless at 44kHz or 48kHz at 24 bits.

11. Remote

The Mytek Brooklyn DAC is infrared remote ready and will work with any Aluminum Apple Remote or any Universal Remote Control using the Philips RC5 standard.

- OFF
- RC5
- Apple

11.1 The Brooklyn DAC Apple Remote Setup

1. Turn the knob round until you see „Remote“ menu then press third button to activate the menu.
2. Choose „NEC“ option. „Remote Addr“ appears on the left.
3. Activate „Remote Addr“ menu by pressing fourth button. The menu should be backlit with blue colour.
4. Press the center (Enter) button on the Apple Remote.
5. Done! - the Apple remote is paired.

11.2 The Brooklyn DAC Standard Remote (RC5) Setup.

1. Turn the knob round until you see „Remote“ menu then press third button to activate the menu.
2. Choose „RC5“ option. „Remote Addr“ appears on the left.
3. Activate „Remote Addr“ menu by pressing fourth button. The menu should be backlit with blue colour.
4. Press any button on the RC5 compatible remote. The Brooklyn DAC find the address automatically
5. Done! - the remote is paired.



MYTEK

12. Technical Specification

ANALOG

- Analog Outputs Connectors: 2 XLR balanced outputs, 2 RCA unbalanced outputs
- Resolution DA: PCM 32bit / DSD up to 256 (11.2 Mhz)
- PCM Sample Rate: 44,1 / 48 / 88,2 / 96 / 176,4 / 192 / 384 Khz
- Dynamic Range: 130dB
- Output Impedance: 75 Ohm
- Headphone Amp: more than 500mA, 6 Watts
- High Current, High Slew Rate ultra low distortion, balanced
- Built-in Analog Preamp: Line level input or Phono M/M, M/C input, relay controlled

DIGITAL

- Computer Audio I/O: 2.0 Hi-Speed, data stream up to 480Mbps/384kHz, Type B, driverless.
- AES/EBU Input: XLR, PCM up to 24Bits / 384.0kHz, DSD up to x128 (DoP)
- S/PDIF Optical Input: up to 176.4kHz, DSD x64, single wire
- S/PDIF Coaxial Input 1 & 2: PCM up to 24Bits / 384.0kHz, DSD up to x128 (DoP), single wire
- SDIF DSD Input: DSD up to x256 (natively)
- WordClock I/O: BNC
- Clock: Mytek Femtoclock Generator (tm) 0.82ps internal jitter, Wordclock Input and Output (allows stacking multiple units for multichannel operation, includes mch DSD).

GENERAL

- Firmware: upgradable via USB Control panel, updates available online, periodic feature upgrades
- Power Supply: Internal switching PSU, 100 - 240 V AC
- External power supply: 12V, 4 - 6A / connector dimensions: 5,5 mm / 2,5 mm (inner pin)

⊖ ⊕ positive polarity

- Dimensions [W x H x D]: 218 x 44 x 206 mm / 1U half rack
- Weight: 1,6 kg
- Brooklyn DAC power consumption: no load: 19VA at 230VAC, 150hm load per channel, full scale sine: 24VA at 230VAC ,no load: 11W at 12VDC, 150hm load per channel, full scale sine: 17W at 12VDC

MYTEK

13. Warranty

Each individual Brooklyn DAC undergoes comprehensive quality control and a complete test before shipping. This Brooklyn DAC is warranted by Mytek to the original purchaser against defects in workmanship and materials used in manufacture for a period of two years from the date of purchase.

Faults due to customer misuse, unauthorized modifications or accidents are not covered by this warranty. No other warranty is expressed or implied.

If you suspect that your product is faulty, please contact your local retailer. Prior to shipping customer or retailer must obtain an RMA number from Mytek for warranty services. Units sent without RMA number will not be accepted.

Mytek extends affordable repair service for all units manufactured to date that are not covered by this Warranty. Mytek repair centers are located at Mytek Headquarters in Brooklyn / New York, and in Warsaw / Poland (at Mytek EU Distribution Office).

Important Safety Information

- Read, keep and follow these instructions.
- Connect all your devices before powering the unit.
- Do not expose this device to moisture, rain and liquid of any kind.
- Clean only with dry cloth.
- If any form of liquid or a foreign object enter the device switch it off and unplug it from the power source. Do not operate device until the foreign object is removed or the liquid has completely dried. If doubt please contact Mytek Digital.
- Do not block any ventilation openings. Install in accordance with the manufacturer's instructions.
- Do not install near any heat sources such as radiators, heat registers, stoves, or other apparatus (including amplifiers) that produce heat.
- Do not defeat the safety purpose of the polarized or grounding-type plug. A polarized plug has two blades with one wider than the other. A grounding-type plug has two blades and a third grounding prong. The wide blade or the third prong are provided for your safety. If the provided plug does not fit into your outlet, consult an electrician for replacement of the obsolete outlet.
- Protect the power cord from being walked on or pinched particularly at plugs, convenience receptacles, and the point where they exit from the apparatus.
- Only use attachments/accessories specified by the manufacturer.
- When a cart is used, use caution when moving the cart/apparatus combination to avoid injury from tip-over.
- Unplug this apparatus during lightning storms or when unused for long periods of time.
- Refer all servicing to qualified service personnel. Servicing is required when the apparatus has been damaged in any way, such as power-supply cord or plug is damaged, liquid has been spilled or objects have fallen into the apparatus, the apparatus has been exposed to rain or moisture, does not operate normally, or has been dropped.

Warning

Excessive sound pressure from speakers and headphones can cause hearing loss. In order to use this product safely, avoid prolonged listening at excessive sound pressure levels.

For the customers in the U.S.A.

This equipment has been tested and found to comply with the limits for a Class A digital device, pursuant to Part 15 of the FCC Rules. These limits are designed to provide reasonable protection against harmful interference when the equipment is operated in a commercial environment. This equipment generates, uses, and can radiate radio frequency energy and, if not installed and used in accordance with the instruction manual, may cause harmful interference to radio communications.

You are cautioned that any changes or modifications not expressly approved in this manual could void your authority to operate this equipment.

All interface cables used to connect peripherals must be shielded in order to comply with the limits for a digital device pursuant to Subpart B of Part 15 of FCC Rules.

This device complies with Part 15 of the FCC Rules. Operation is subject to the following two conditions: (1) this device may not cause harmful interference, and (2) this device must accept any interference received, including interference that may cause undesired operation.

This product with the CE marking complies with the EMC Directive issued by the Commission of the European Community. Compliance with this directive implies conformity to the following European standards:

- EN55103-1 : Electromagnetic Interference (Emission)
- EN55103-2 : Electromagnetic Susceptibility (Immunity)

This product is intended for use in the following Electromagnetic Environments: E1 (residential), E2 (commercial and light industrial), E3 (urban outdoors), E4 (controlled EMC environment, ex. TV studio).

Information on Disposal for Users of Waste Electrical & Electronic Equipment(private households).

The Wheelie Bin symbol on the products and/or accompanying documents means that used electrical and electronic products should not be mixed with general household waste. Disposing of this product correctly will help save valuable resources and prevent any potential negative effects on human health and the environment.

To properly dispose harmful substances and recycle the product, the user is obliged to return it at the point of collection of electrical and electronic equipment waste. For more information please contact your local authorities, waste disposal units or retailer.



